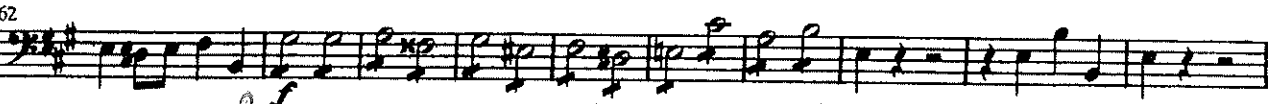
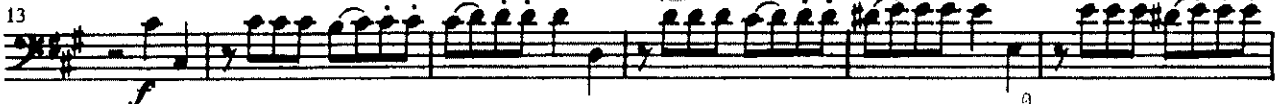
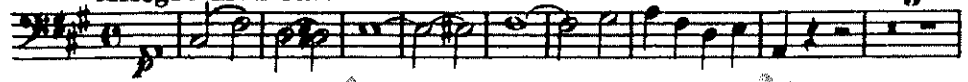


Wolfgang Amadeus Mozart
Symphony No. 29

$\text{♩} = 80$

VIOLONCELLO e BASSO
Allegro moderato

3



VIOLONCELLO e BASSO

$\text{♩} = 76$
Andante

First musical staff, starting with a *p* dynamic marking.

Second musical staff, starting with a first fingering (*1*) marking.

Third musical staff, containing section **A**, with *f* and *p* dynamic markings and a first fingering (*1*) marking.

Fourth musical staff, containing section **B**, with *pp* and *p* dynamic markings.

Fifth musical staff.

Sixth musical staff, ending with a first fingering (*1*) marking.

Seventh musical staff, containing section **C**.

Eighth musical staff, with first fingering (*1*) markings.

Ninth musical staff, containing section **D**.

Tenth musical staff, with *f* and *p* dynamic markings.

Eleventh musical staff, containing the **Goda** section, with *f* and *p* dynamic markings and a first fingering (*1*) marking.

Twelfth musical staff, ending with a first fingering (*1*) marking.

VIOLONCELLO e BASSO

$\text{♩} = 144$

MENUETTO

3

Menuetto d.c.

$\text{♩} = 108$ Allegro con spirito

VIOLONCELLO e BASSO

64 *p* *f* *p* *f*

76 *p* *f* C₂ 1

84 1 *f* 1 *p*

93 2 D

105 *f* *p*

112 *f* E *p*

121 1 *f* 1 1 1 1

131 1 F 1 *p*

143

151 G

160 *f*

169 1 1 1

178 1 2

Detailed description: This page of a musical score for Violoncello and Bass contains ten staves of music, numbered 64 to 178. The music is written in a bass clef with a key signature of one sharp (F#). The score includes various dynamics such as *p* (piano) and *f* (forte), and features several trills. Chordal markings include C₂, D, E, and F. First and second endings are indicated with '1' and '2' above the notes. The piece concludes with a double bar line at measure 178.